



Skinker-DeBaliviere

# **SAFETY AND SECURITY REPORT: AUGUST 2018**

# Summary Notes: SDB August 2018

- 30 Total Crimes
  - **36.36% increase** compared to August 2017 (22 crimes)
    - **Decreased:** robbery
    - **Increased:** assault, auto theft, larceny
    - **No change:** arson, burglary, homicide, rape
  - **7 crime against persons** (6 assaults, 1 robbery)
    - **133.33% increase** compared to August 2017 (3 crimes)
  - Crime occurred most frequently on Wednesdays and Fridays.
- 138 total crimes so far in 2018
  - **14.81% decrease** compared to this point in 2017 (162 crimes)
    - **Decreased:** auto theft, burglary, larceny, robbery
    - **Increased:** assault
    - **No change:** arson, homicide, rape
  - **32 crimes against persons** so far in 2018
    - **3.03% decrease** compared to this point in 2017 (33 crimes)

# Skinker-DeBaliviere: August 2018

Crime	
Arson	0
Assault	6
Auto Theft	6
Burglary	4
Homicide	0
Larceny	13
Rape	0
Robbery	1
<b>Total</b>	<b>30</b>

Day	
Sunday	2
Monday	1
Tuesday	2
Wednesday	10
Thursday	2
Friday	10
Saturday	3
<b>Total</b>	<b>30</b>

Environment	
Inside	11
Outside	18
Unknown	1
<b>Total</b>	<b>30</b>

Crimes Against	
Persons	7
Property	23
<b>Total</b>	<b>30</b>

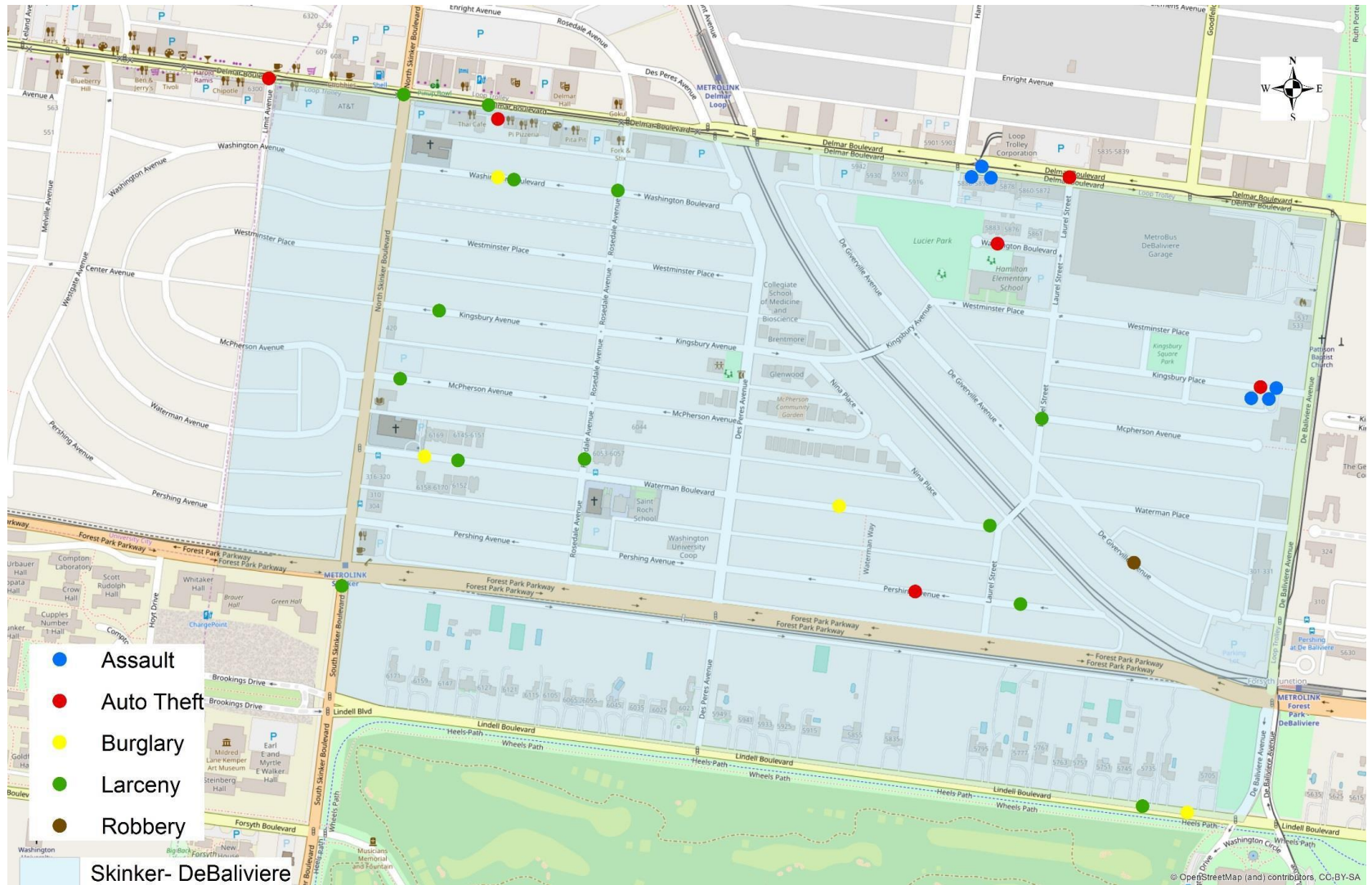
Day/Night	
Day	25
Night	5
<b>Total</b>	<b>30</b>

# SDB: Comparing 2017 and 2018

2017		Jan	Feb	Mar	Apr	May	Jun	Jul	Aug	Sep	Oct	Nov	Dec	Year End Total	
	Arson	0	0	0	0	0	0	0	0	0	0	0	0	0	0
	Assault	1	5	1	1	3	6	3	1	0	6	0	0	0	27
	Auto Theft	9	1	1	2	1	2	3	4	4	3	2	1	33	
	Burglary	1	3	4	1	3	6	5	4	4	2	3	3	39	
	Homicide	0	0	0	0	0	0	0	0	0	0	0	0	0	
	Larceny	6	18	5	6	18	11	4	11	17	12	13	13	134	
	Rape	0	0	0	0	0	0	0	0	0	0	0	0	0	
	Robbery	0	0	3	4	0	0	3	2	4	11	0	0	27	
<b>Total Crimes</b>	<b>17</b>	<b>27</b>	<b>14</b>	<b>14</b>	<b>25</b>	<b>25</b>	<b>18</b>	<b>22</b>	<b>29</b>	<b>34</b>	<b>17</b>	<b>17</b>	<b>259</b>		

2018		Jan	Feb	Mar	Apr	May	Jun	Jul	Aug	Sep	Oct	Nov	Dec	YTD	M/M Change	YTD Change	
	Arson	0	0	0	0	0	0	0	0						0	-	-
	Assault	6	0	1	0	0	7	2	6						22	500.00%	4.76%
	Auto Theft	1	1	3	2	4	1	3	6						21	50.00%	-8.70%
	Burglary	2	0	1	0	2	3	3	4						15	0.00%	-44.44%
	Homicide	0	0	0	0	0	0	0	0						0	-	-
	Larceny	10	7	8	7	6	9	10	13						70	18.18%	-11.39%
	Rape	0	0	0	0	0	0	0	0						0	-	-
	Robbery	0	2	1	2	0	2	2	1						10	-50.00%	-16.67%
<b>Total Crimes</b>	<b>19</b>	<b>10</b>	<b>14</b>	<b>11</b>	<b>12</b>	<b>22</b>	<b>20</b>	<b>30</b>						<b>138</b>	<b>36.36%</b>	<b>-14.81%</b>	

# Skinker-DeBaliviere Total Crime: August 2018



# Appendix 1 Links

- [SBD Day/Night Crimes](#)
- [SDB Violent Crimes](#)
- [SDB Density Map](#)
- [SDB Larceny Breakdown](#)
- [SDB Inside/Outside Larcenies](#)
- [SDB Crime by Day](#)
- [SDB Crime by Day and Time](#)
- [SDB Crime and CFS by Time](#)
- [SDB Crime by Category and Time](#)
- [SDB Crime by Category and Day](#)

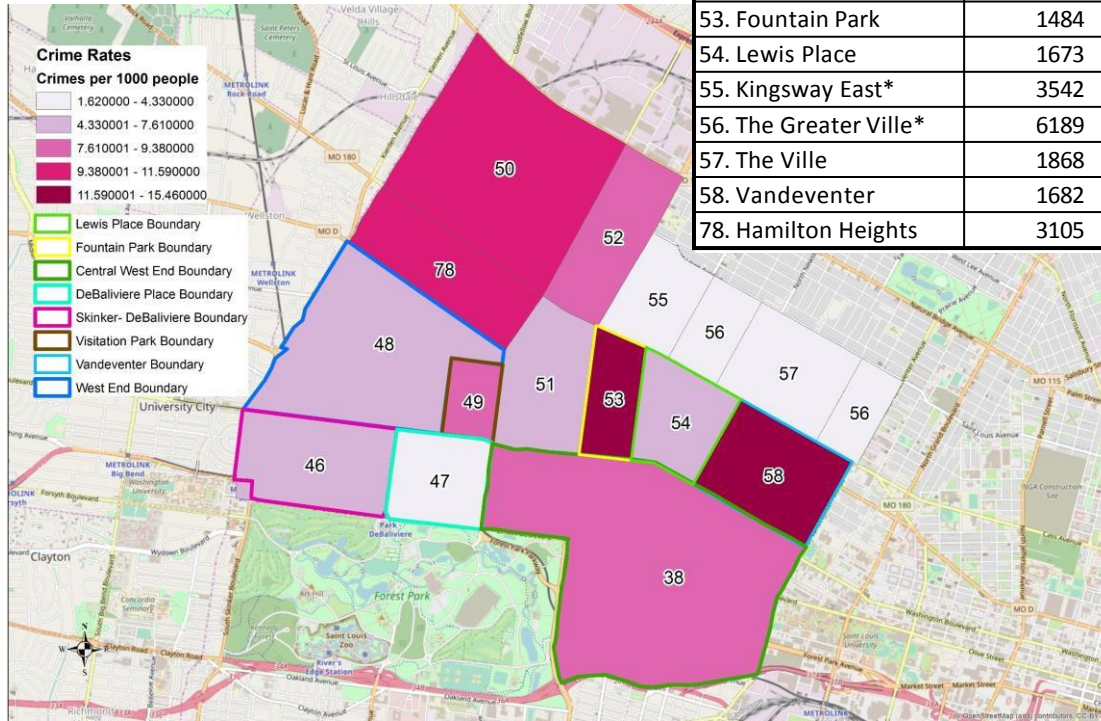
# Summary Notes: DBP August 2018

- 15 Total Crimes
  - **6.25% decrease** compared to August 2017 (16 crimes)
    - **Decreased:** assault
    - **Increased:** N/A
    - **No change:** arson, auto theft, burglary, homicide, larceny, rape, robbery
  - **2 crimes against persons** (2 robberies)
    - **33.33% decrease** compared to August 2017 (2 crimes)
  - Crime occurred most frequently on Tuesdays.
- 121 total crimes so far in 2018
  - **23.42% decrease** compared to this point in 2017 (158 crimes)
    - **Decreased:** auto theft, burglary, homicide, larceny, rape, robbery
    - **Increased:** assault
    - **No change:** arson
  - **19 crimes against persons** so far in 2018
    - **29.63% decrease** compared to this point in 2017 (27 crimes)

# District 5 Density Map: August 2018

\*Kingsway East and The Greater Ville neighborhoods are split between District 5 and District 6.

Neighborhood	2010 Population	August Crime Count	Crime Rate per 1000 People
38. Central West End	14471	127	8.78
46. Skinker-DeBaliviere	4077	30	7.36
47. Debaliviere Place	3466	15	4.33
48. West End	6574	50	7.61
49. Visitation Park	960	9	9.38
50. Wells-Goodfellow	5895	61	10.35
51. Academy	2816	21	7.46
52. Kingsway West	3441	32	9.30
53. Fountain Park	1484	19	12.80
54. Lewis Place	1673	12	7.17
55. Kingsway East*	3542	15	4.23
56. The Greater Ville*	6189	10	1.62
57. The Ville	1868	8	4.28
58. Vandeventer	1682	26	15.46
78. Hamilton Heights	3105	36	11.59



## Important Change:

Previous monthly reports have used “density maps” that show the *raw number* of crimes per neighborhood. Starting with this report and moving forward, density maps will be made to show crime *rates* instead. This will more accurately depict neighborhoods of concern. Raw crime numbers can still be accessed in the table above.



# District 5 Density Map Explanation

- District 5 Map
  - There are 15 neighborhoods in District 5.
  - The **minimum number of crimes** in one neighborhood was 8 (The Ville).
  - The **maximum number of crimes** in one neighborhood was 127 (Central West End).
  - The **mean number of crimes** for the district was 31.40.
- Crime Rate
  - The crime rate was calculated using the population data from the 2010 census data.
  - The **minimum crime rate** was 1.62 crimes per 1,000 people (The Greater Ville).
  - The **maximum crime rate** was 15.46 crimes per 1,000 people (Vandeventer).
  - The **mean crime rate** for the district was 8.11 crimes per 1,000 people.

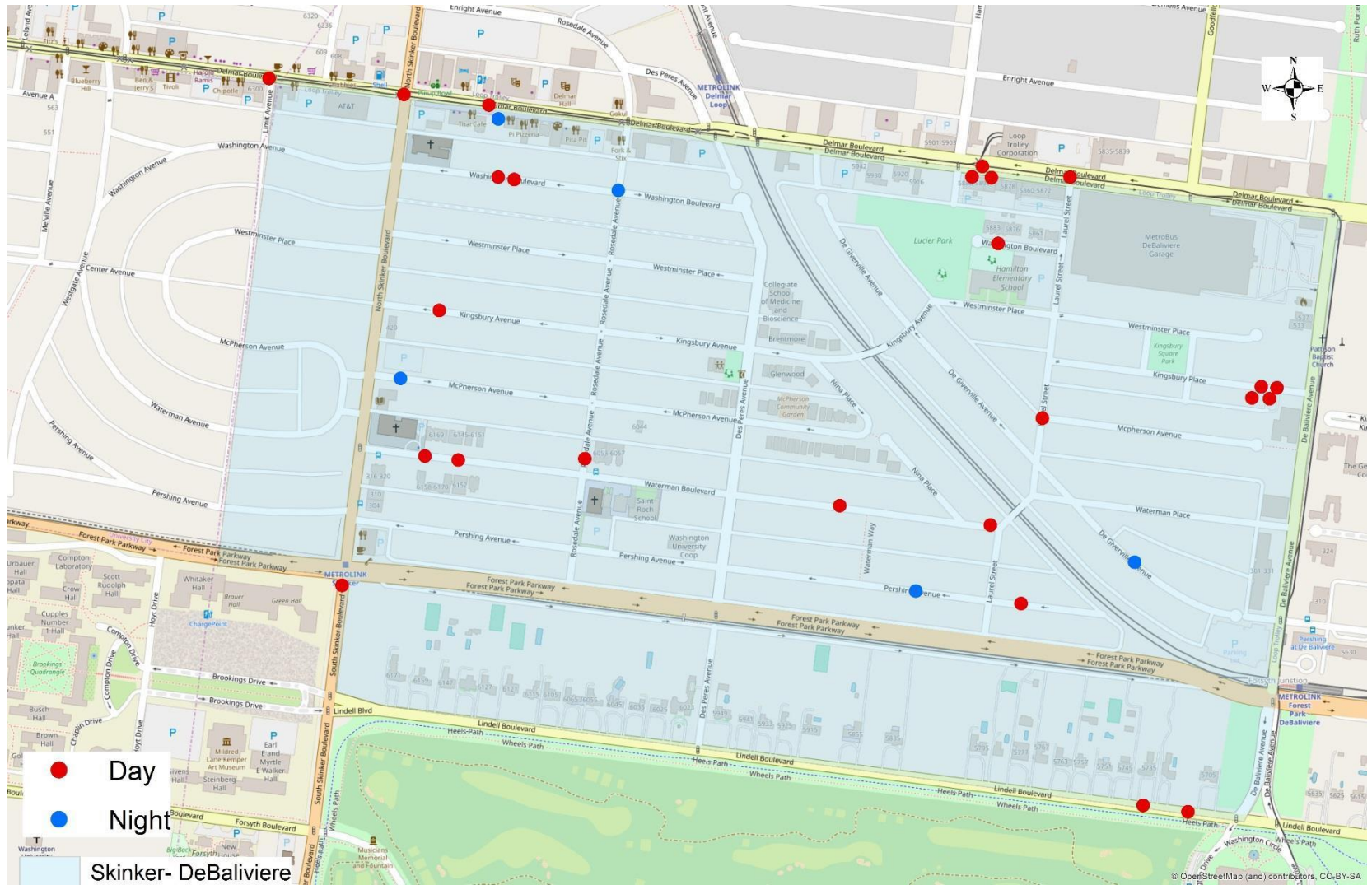
*\*Numbers in District breakdown include reclassified crimes from previous months.*



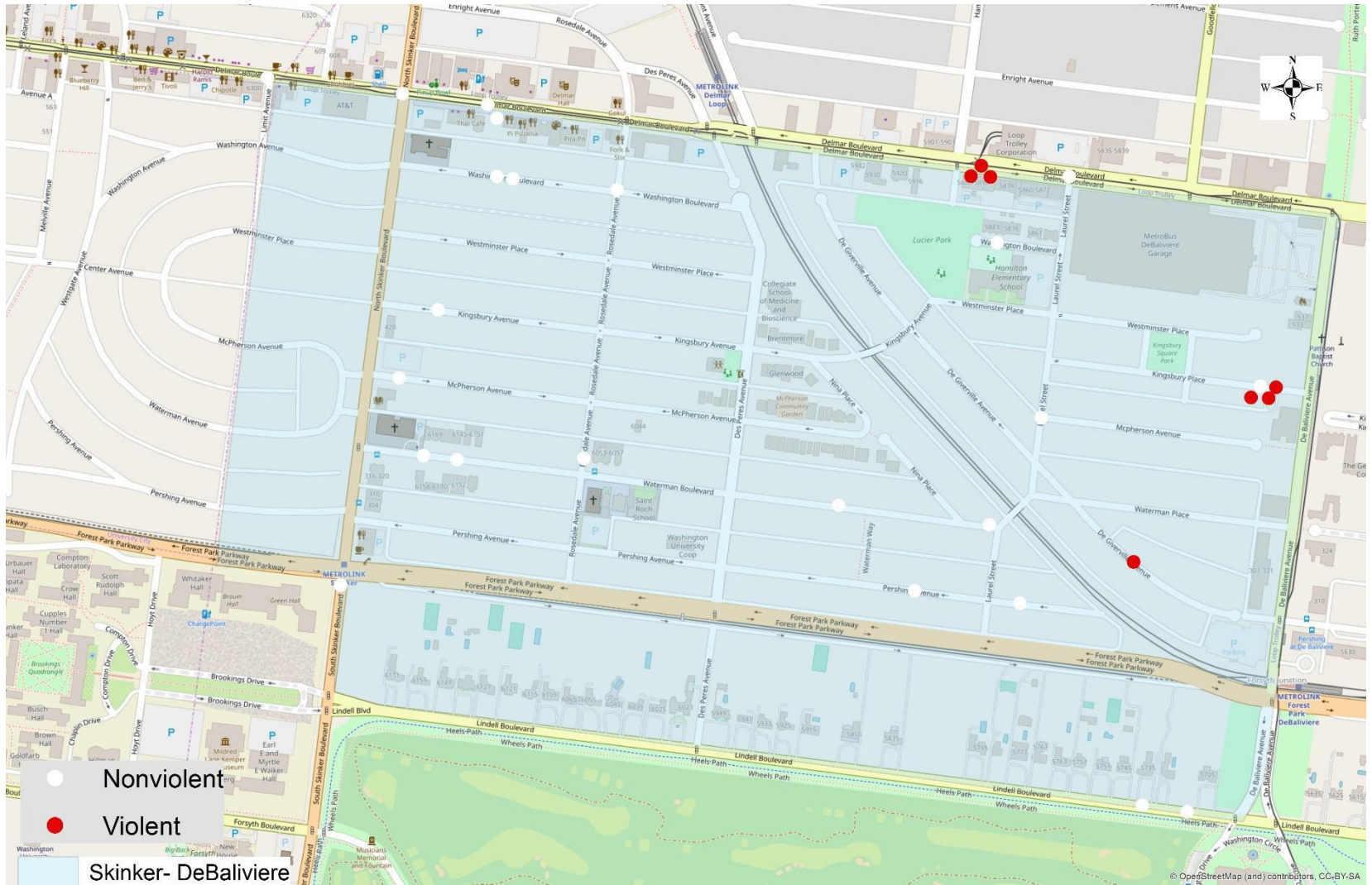
Skinker- DeBaliviere

# APPENDIX 1

# SDB Day/Night Crimes



# SDB Violent Crimes



# SDB Density Map



# SDB: August 2018

## Larceny Breakdown

Type of Larceny	
All Other	1
Bicycle	2
From Building	3
From Coin Machine	0
From Motor Vehicle	5
Motor Vehicle Parts	2
Purse Snatching	0
Shoplifting	0
<b>Total</b>	<b>13</b>

Environment	
Inside	3
Outside	9
Unknown	1
<b>Total</b>	<b>13</b>

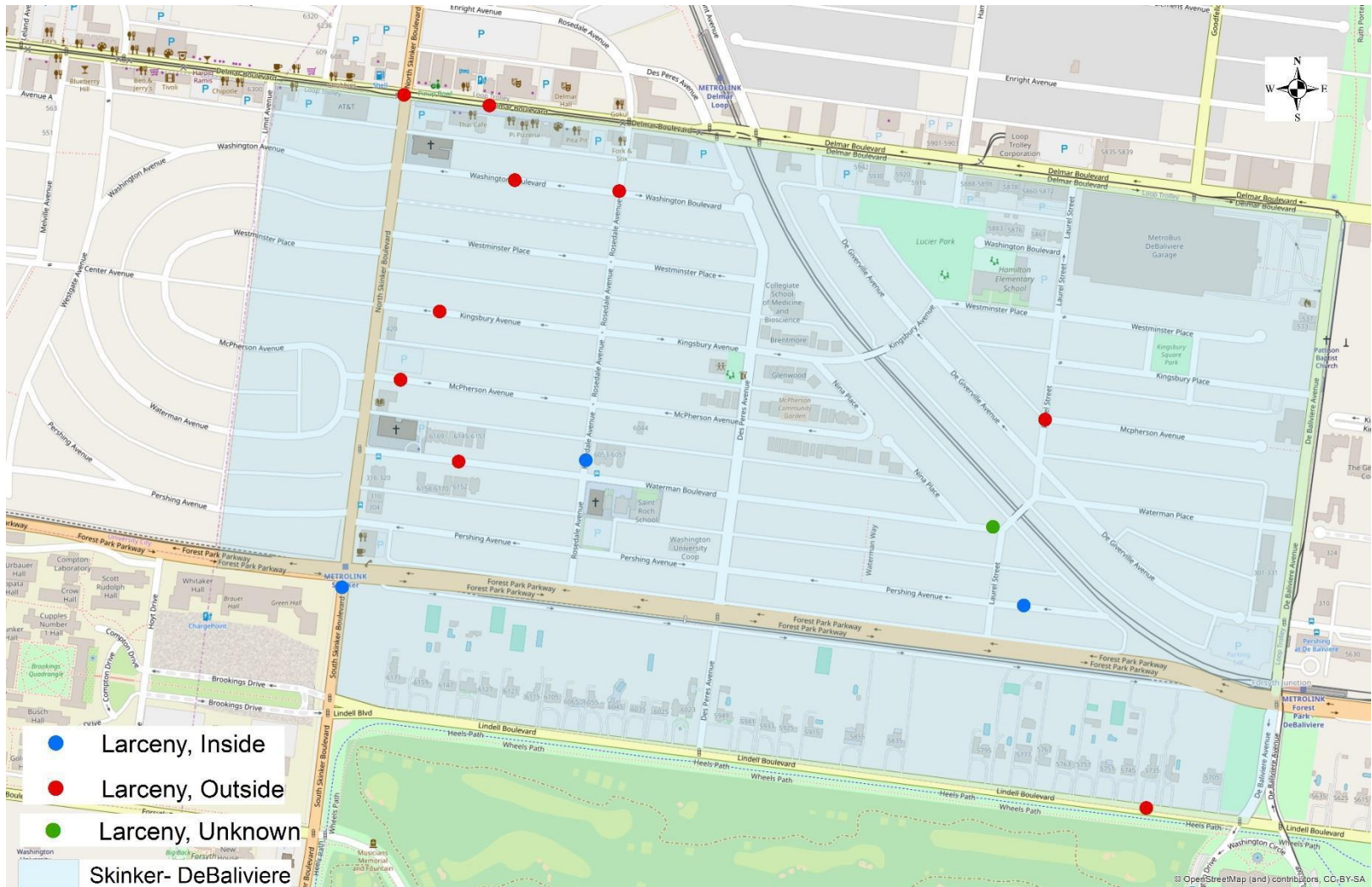
Monetary Value	
Under \$500	8
\$500 - \$24,999	5
Over \$25,000	0
<b>Total</b>	<b>13</b>

Time Frame	
12:00am - 3:00am	1
4:00am - 7:00am	0
8:00am - 11:00am	1
12:00pm - 3:00pm	5
4:00pm - 7:00pm	4
8:00pm - 11:00pm	2
<b>Total</b>	<b>13</b>

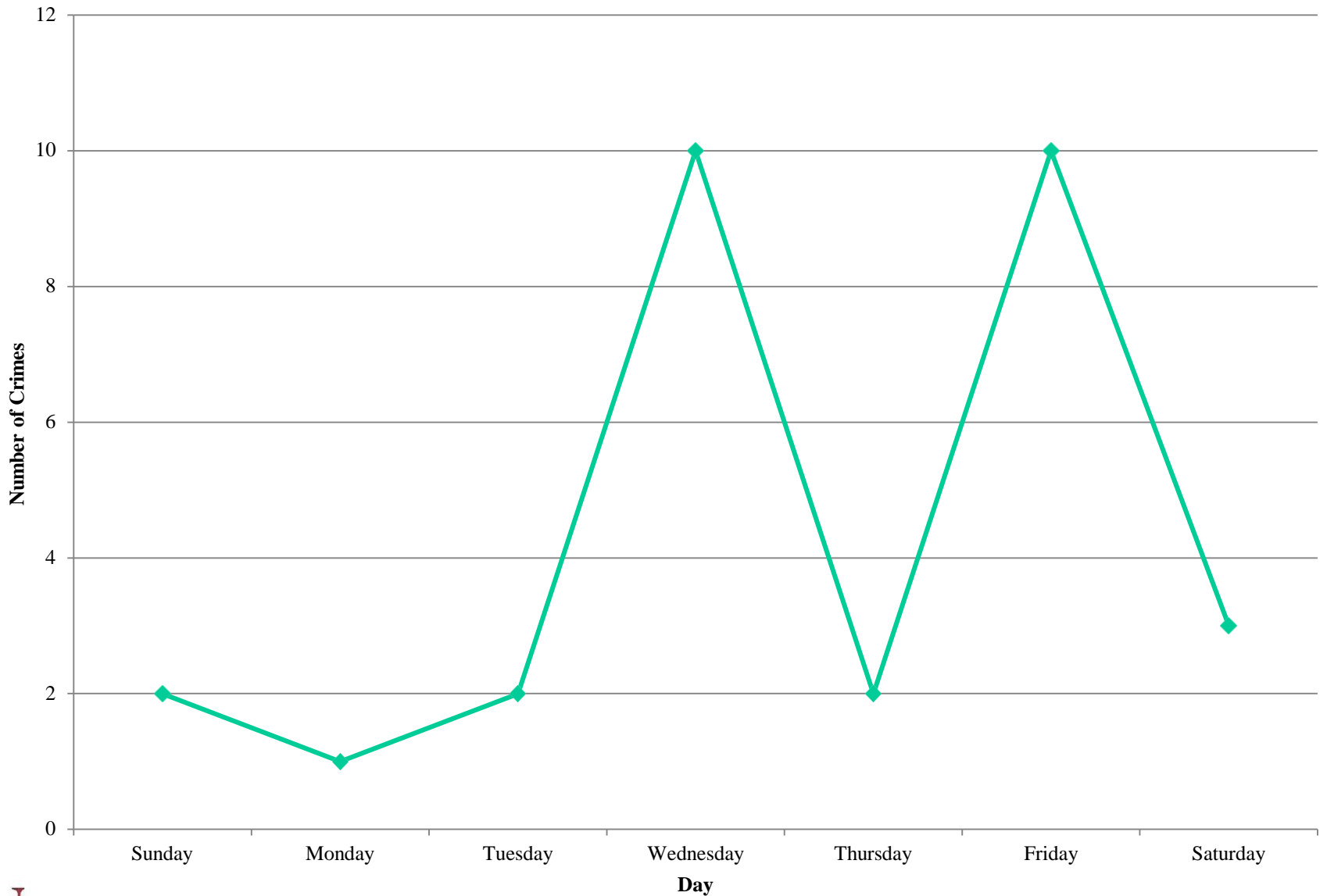
Day	
Sunday	2
Monday	1
Tuesday	1
Wednesday	3
Thursday	1
Friday	5
Saturday	0
<b>Total</b>	<b>13</b>

Day/Night	
Day	11
Night	2
<b>Total</b>	<b>13</b>

# SDB Inside/Outside Larcenies

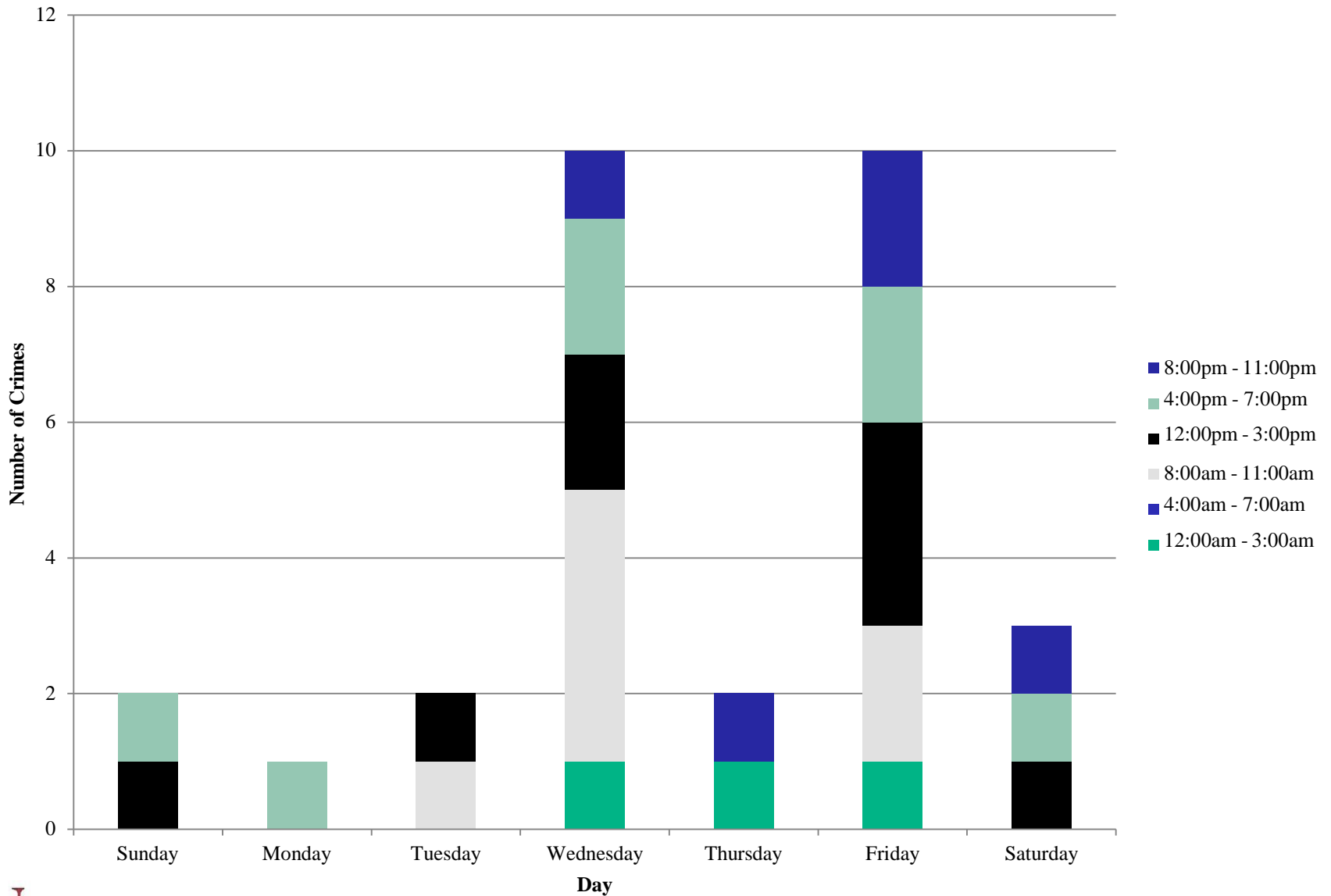


# SDB Crime by Day - August 2018

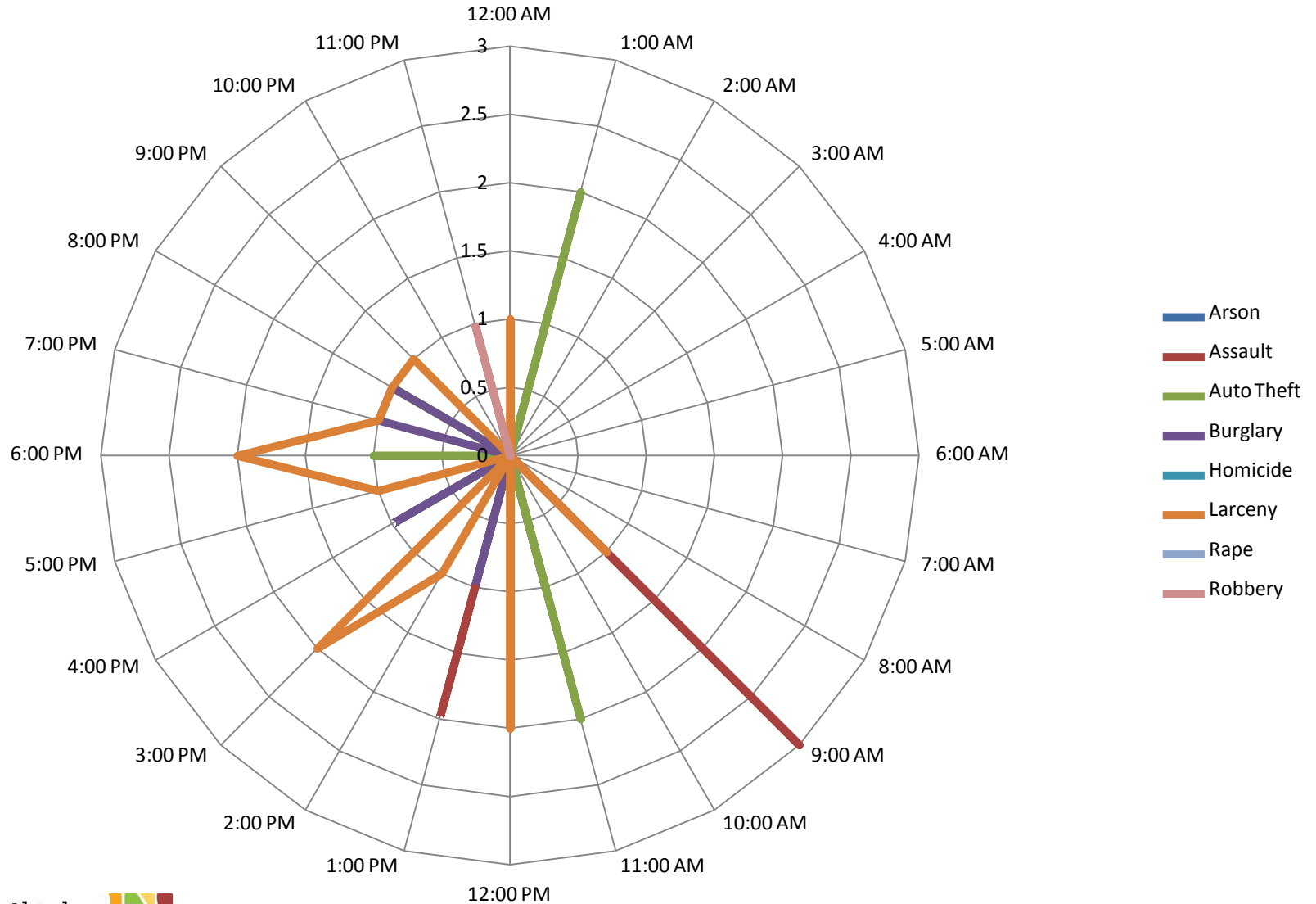




# SDB Crime by Day and Time Frame - August 2018



# SDB Crime by Category and Time of Day - August 2018



## SDB Crime by Category and Day - August 2018

