



Skinker-DeBaliviere, DeBaliviere Place, West End, Visitation Park

SAFETY AND SECURITY REPORT: JANUARY 2019

Summary Notes: SDB January 2019

- 10 Total Crimes
 - **47.37% decrease** compared to January 2018 (19 crimes)
 - **Decreased:** assault, larceny
 - **Increased:** burglary, robbery
 - **No change:** arson, auto theft, homicide, rape
 - **1 crime against persons** (1 robbery)
 - **83.33% decrease** compared to January 2018 (6 crimes)
 - Crime occurred most frequently on Wednesdays.
- 10 total crimes so far in 2019
 - **47.37% decrease** compared to this point in 2018 (19 crimes)
 - **Decreased:** assault, larceny
 - **Increased:** burglary, robbery
 - **No change:** arson, auto theft, homicide, rape
 - **1 crime against persons** so far in 2019
 - **83.33% decrease** compared to this point in 2018 (6 crimes)

Skinker-DeBaliviere: January 2019

Crime	
Arson	0
Assault	0
Auto Theft	1
Burglary	4
Homicide	0
Larceny	4
Rape	0
Robbery	1
Total	10

Day	
Sunday	2
Monday	0
Tuesday	0
Wednesday	3
Thursday	2
Friday	2
Saturday	1
Total	10

Environment	
Inside	4
Outside	6
Unknown	0
Total	10

Crimes Against	
Persons	1
Property	9
Total	10

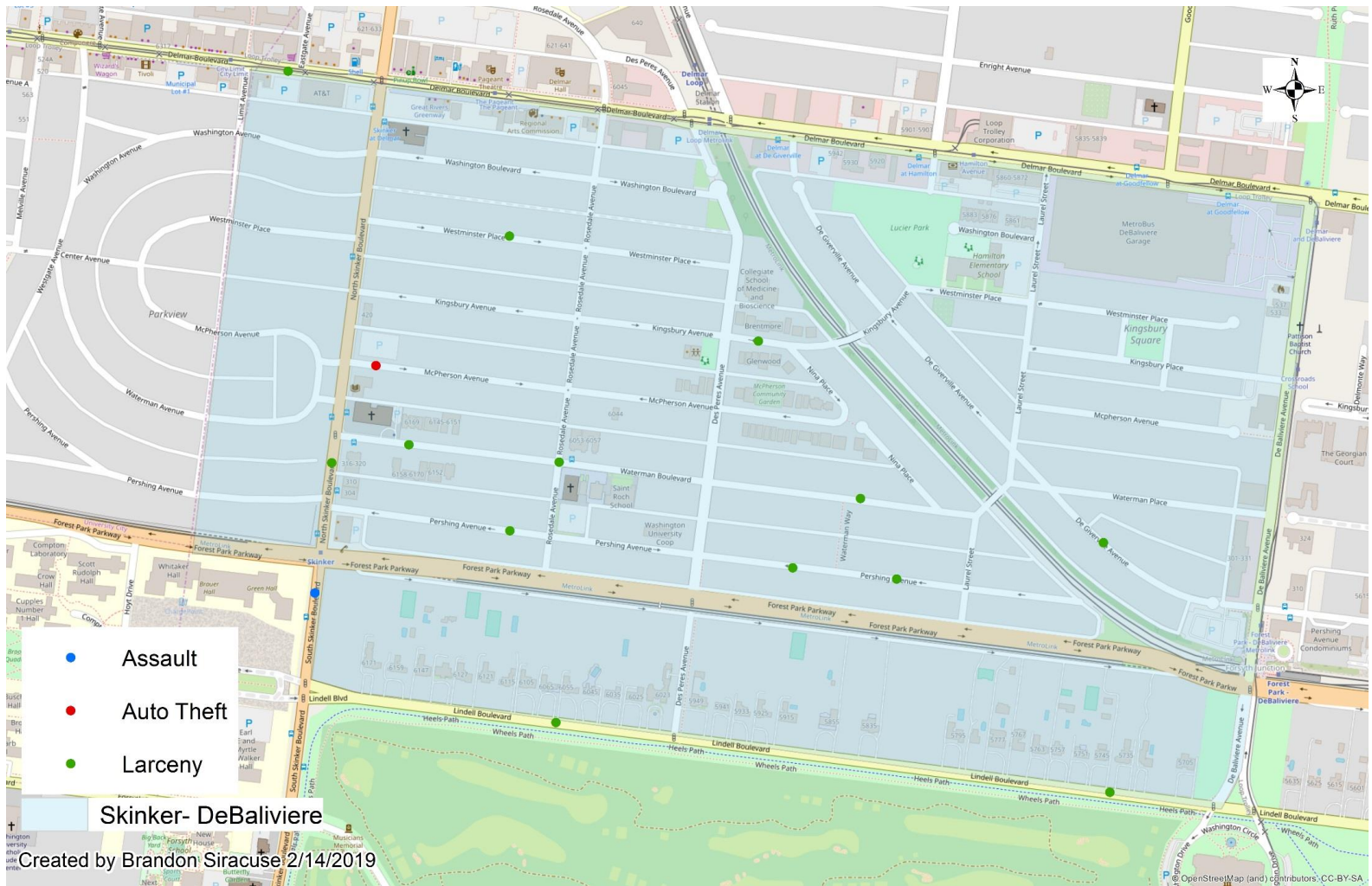
Day/Night	
Day	4
Night	6
Total	10

SDB: Comparing 2018 and 2019

2018		Jan	Feb	Mar	Apr	May	Jun	Jul	Aug	Sep	Oct	Nov	Dec	Year End Total	
	Arson	0	0	0	0	0	0	0	0	0	0	0	0	0	0
	Assault	6	0	1	0	0	7	2	6	1	3	2	1	29	
	Auto Theft	1	1	3	2	4	1	3	6	1	3	1	1	27	
	Burglary	2	0	1	0	2	3	3	4	2	2	1	0	20	
	Homicide	0	0	0	0	0	0	0	0	0	0	0	0	0	
	Larceny	10	7	8	7	6	9	10	13	16	10	15	13	124	
	Rape	0	0	0	0	0	0	0	0	0	0	0	0	0	
	Robbery	0	2	1	2	0	2	2	1	7	0	1	0	18	
Total Crimes	19	10	14	11	12	22	20	30	27	18	20	15	218		

2019		Jan	Feb	Mar	Apr	May	Jun	Jul	Aug	Sep	Oct	Nov	Dec	YTD	M/M Change	YTD Change	
	Arson	0													0	-	-
	Assault	0													0	-100.00%	-100.00%
	Auto Theft	1													1	0.00%	0.00%
	Burglary	4													4	100.00%	100.00%
	Homicide	0													0	-	-
	Larceny	4													4	-60.00%	-60.00%
	Rape	0													0	-	-
	Robbery	1													1	-	-
Total Crimes	10													10	-47.37%	-47.37%	

Skinker-DeBaliviere Total Crime: January 2019



Appendix 1 Links

- [SBD Day/Night Crimes](#)
- [SDB Violent Crimes](#)
- [SDB Density Map](#)
- [SDB Larceny Breakdown](#)
- [SDB Inside/Outside Larcenies](#)
- [SDB Crime by Day](#)
- [SDB Crime by Day and Time](#)
- [SDB Crime and CFS by Time](#)
- [SDB Crime by Category and Time](#)
- [SDB Crime by Category and Day](#)

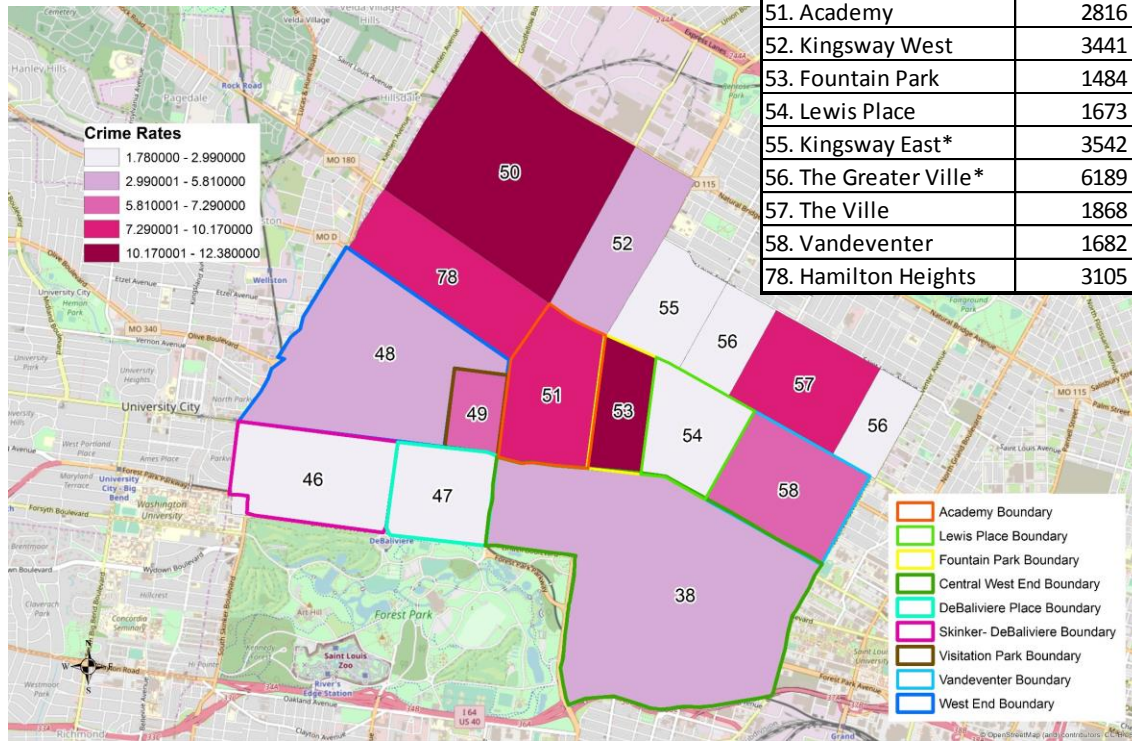
Summary Notes: West End January 2019

- 31 Total Crimes
 - **22.50% decrease** compared to January 2018 (40 crimes)
 - **Decreased:** auto theft, larceny
 - **Increased:** assault, robbery
 - **No change:** arson, burglary, homicide, rape
 - **16 crimes against persons** (10 assaults, 6 robberies)
 - **45.45% increase** compared to January 2018 (11 crimes)
 - Crime occurred most frequently on Tuesdays.
- 31 total crimes so far in 2019
 - **22.50% decrease** compared to this point in 2018 (40 crimes)
 - **Decreased:** auto theft, larceny
 - **Increased:** assault, robbery
 - **No change:** arson, burglary, homicide, rape
 - **16 crimes against persons** so far in 2019
 - **45.45% increase** compared to this point in 2018 (11 crimes)

District 5 Density Map: January 2019

*Kingsway East and The Greater Ville neighborhoods are split between District 5 and District 6.

Neighborhood	2010 Population	January Crime Count	Crime Rate per 1000 People
38. Central West End	14471	82	5.67
46. Skinker-DeBaliviere	4077	10	2.45
47. Debaliviere Place	3466	9	2.60
48. West End	6574	31	4.72
49. Visitation Park	960	7	7.29
50. Wells-Goodfellow	5895	73	12.38
51. Academy	2816	26	9.23
52. Kingsway West	3441	20	5.81
53. Fountain Park	1484	16	10.78
54. Lewis Place	1673	5	2.99
55. Kingsway East*	3542	8	2.26
56. The Greater Ville*	6189	11	1.78
57. The Ville	1868	19	10.17
58. Vandeventer	1682	11	6.54
78. Hamilton Heights	3105	26	8.37



District 5 Density Map Explanation

- District 5 Map
 - There are 15 neighborhoods in District 5.
 - The **minimum number of crimes** in one neighborhood was 5 (Lewis Place).
 - The **maximum number of crimes** in one neighborhood was 80 (Central West End).
 - The **mean number of crimes** for the district was 23.60.
- Crime Rate
 - The crime rate was calculated using the population data from the 2010 census data.
 - The **minimum crime rate** was 1.78 crimes per 1,000 people (The Greater Ville).
 - The **maximum crime rate** was 12.38 crimes per 1,000 people (Wells-Goodfellow).
 - The **mean crime rate** for the district was 6.20 crimes per 1,000 people.



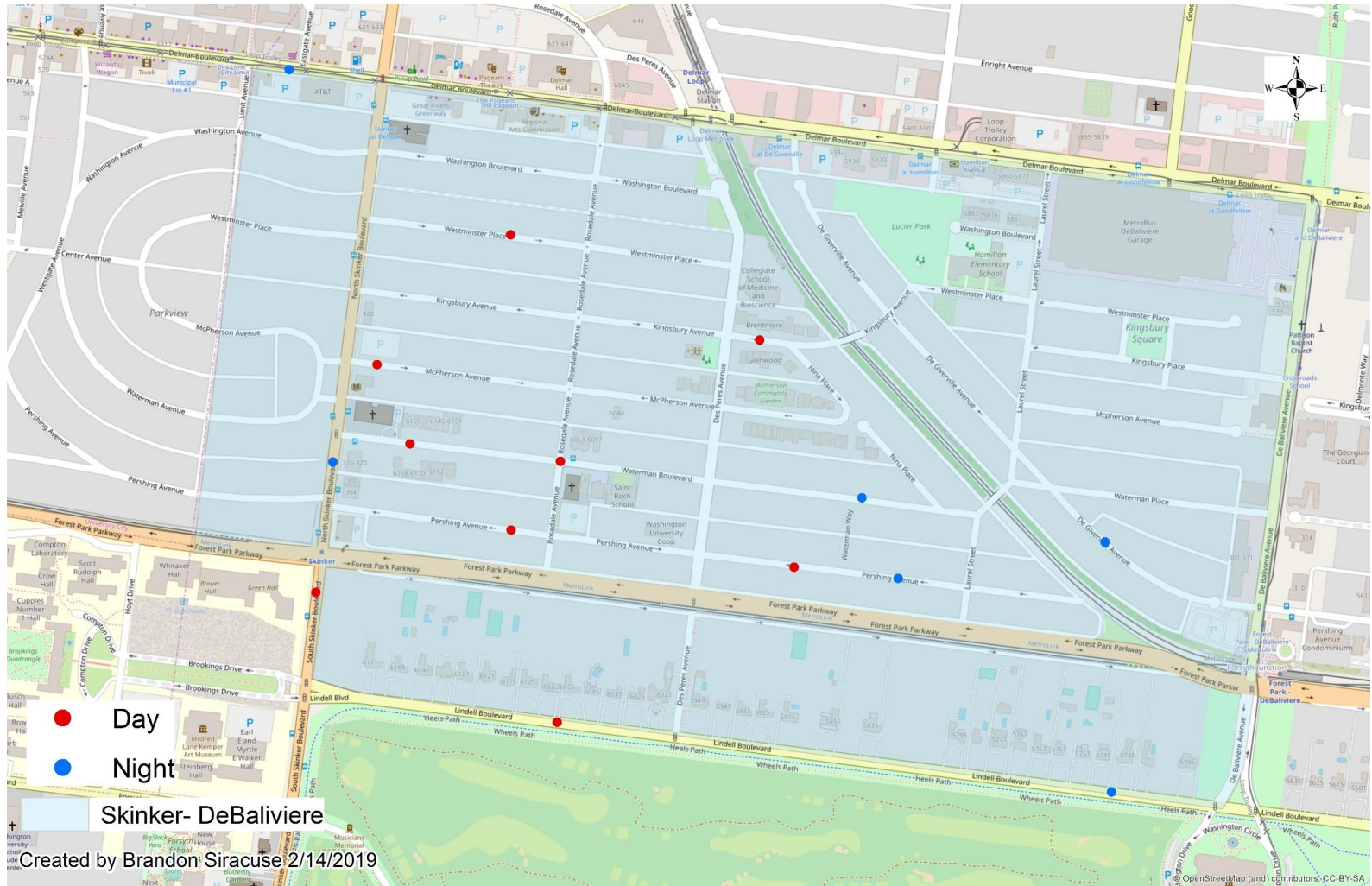
**Numbers in District breakdown include reclassified crimes from previous months.*



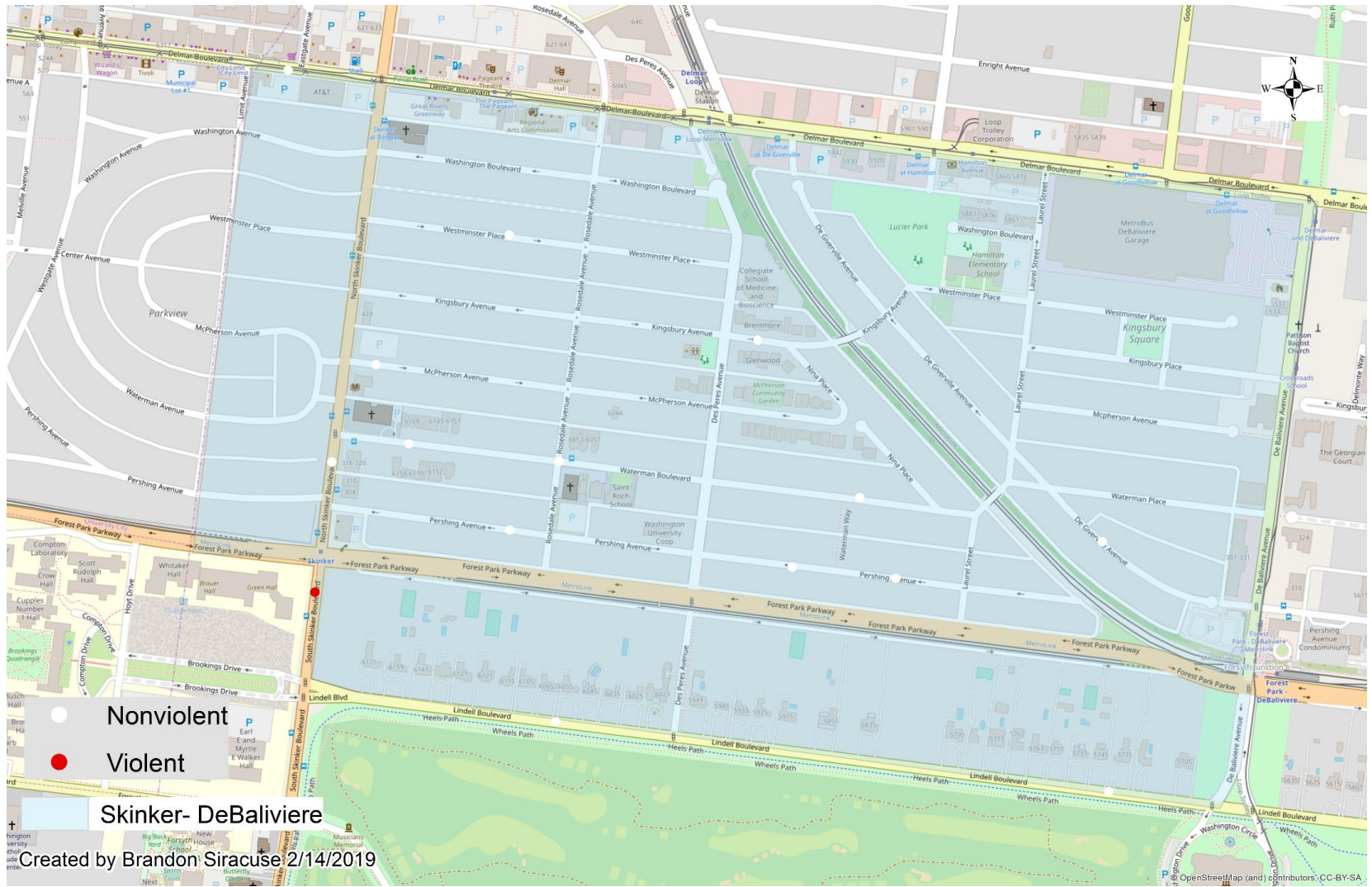
Skinker- DeBaliviere

APPENDIX 1

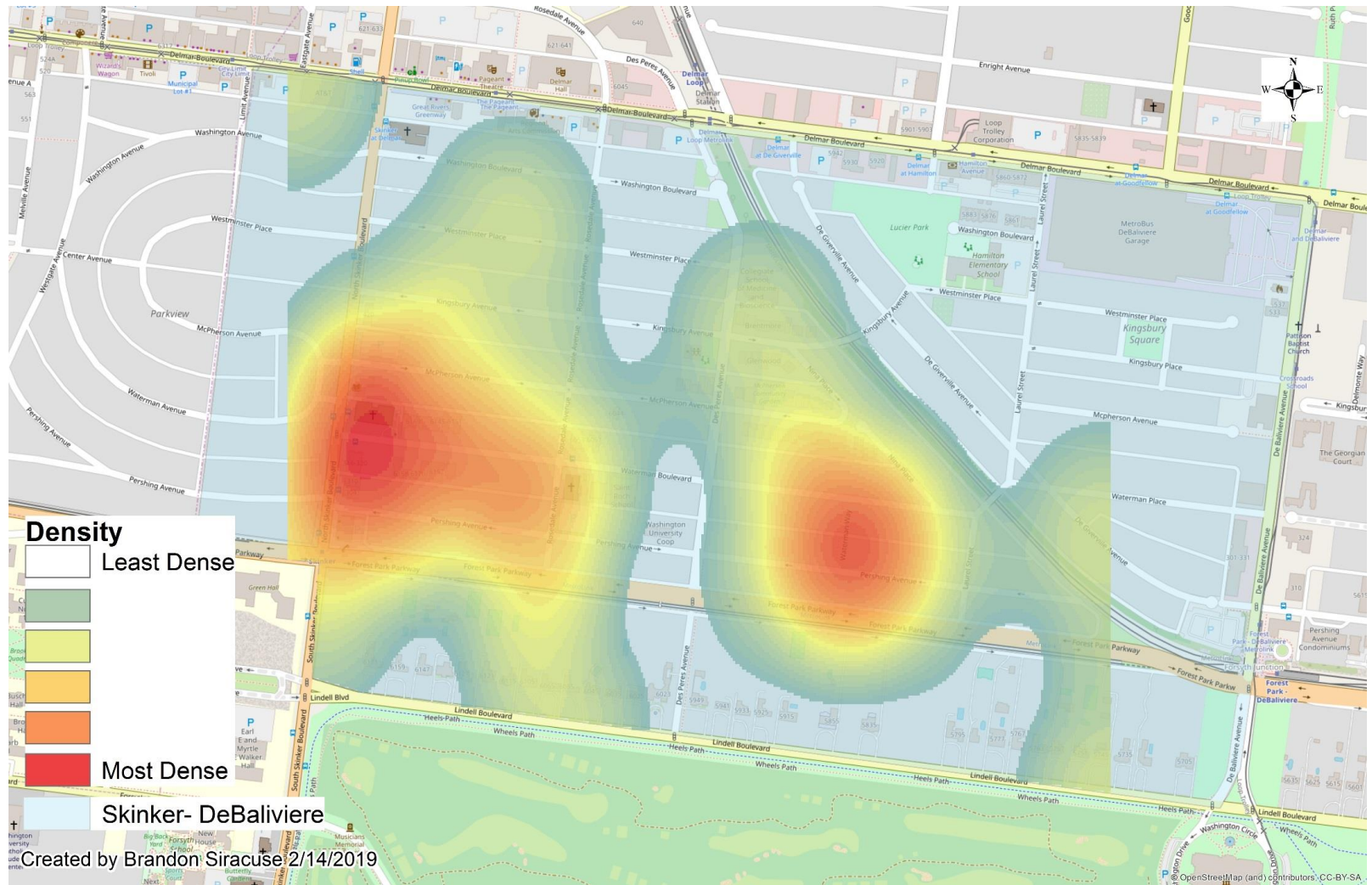
SDB Day/Night Crimes



SDB Violent Crimes



SDB Density Map



SDB: January 2019

Larceny Breakdown

Type of Larceny	
All Other	0
Bicycle	0
From Building	0
From Coin Machine	0
From Motor Vehicle	4
Motor Vehicle Parts	0
Purse Snatching	0
Shoplifting	0
Total	4

Environment	
Inside	0
Outside	4
Unknown	0
Total	4

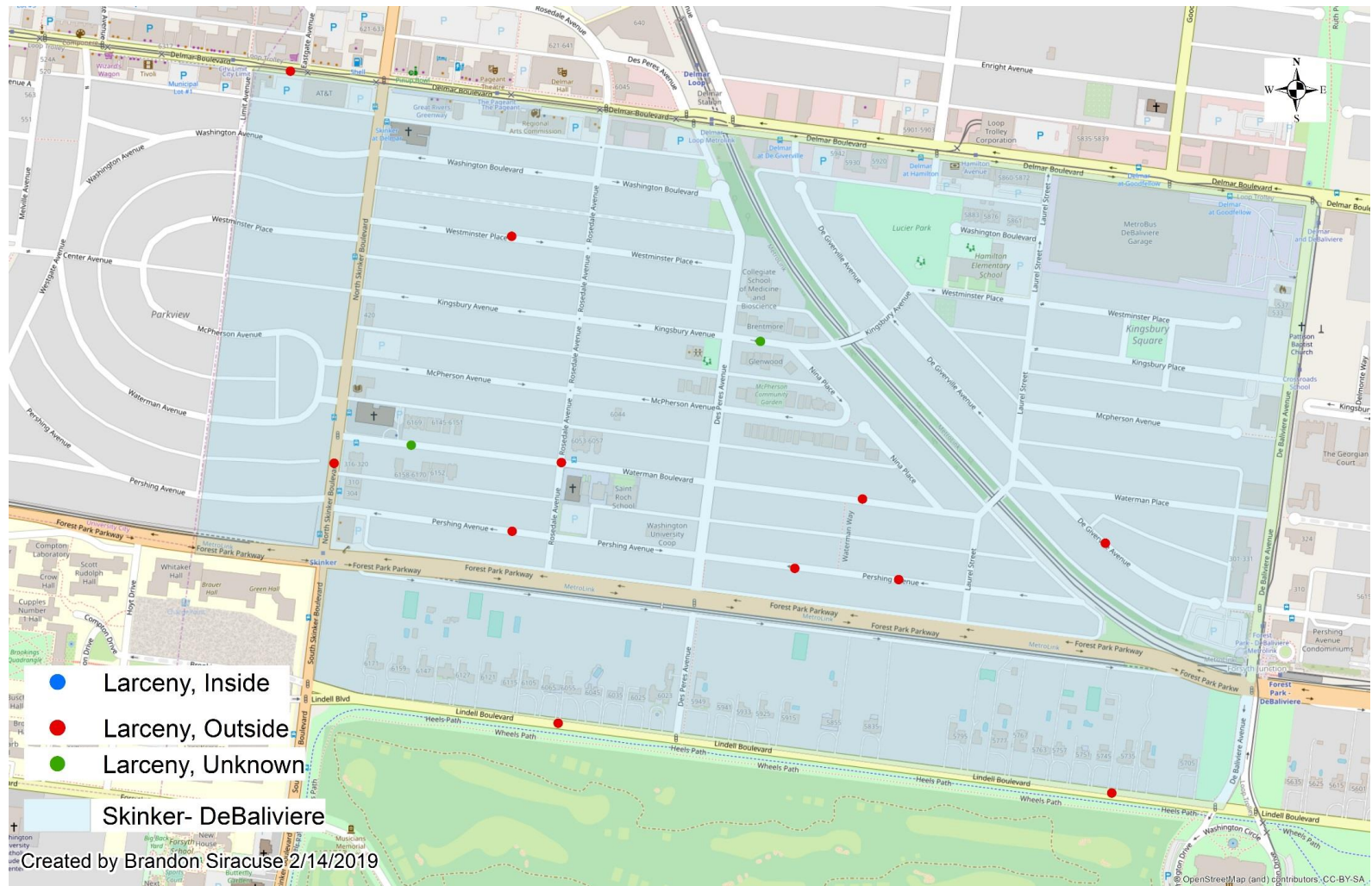
Monetary Value	
Under \$500	2
\$500 - \$24,999	2
Over \$25,000	0
Total	4

Time Frame	
12:00am - 3:00am	0
4:00am - 7:00am	0
8:00am - 11:00am	0
12:00pm - 3:00pm	1
4:00pm - 7:00pm	2
8:00pm - 11:00pm	1
Total	4

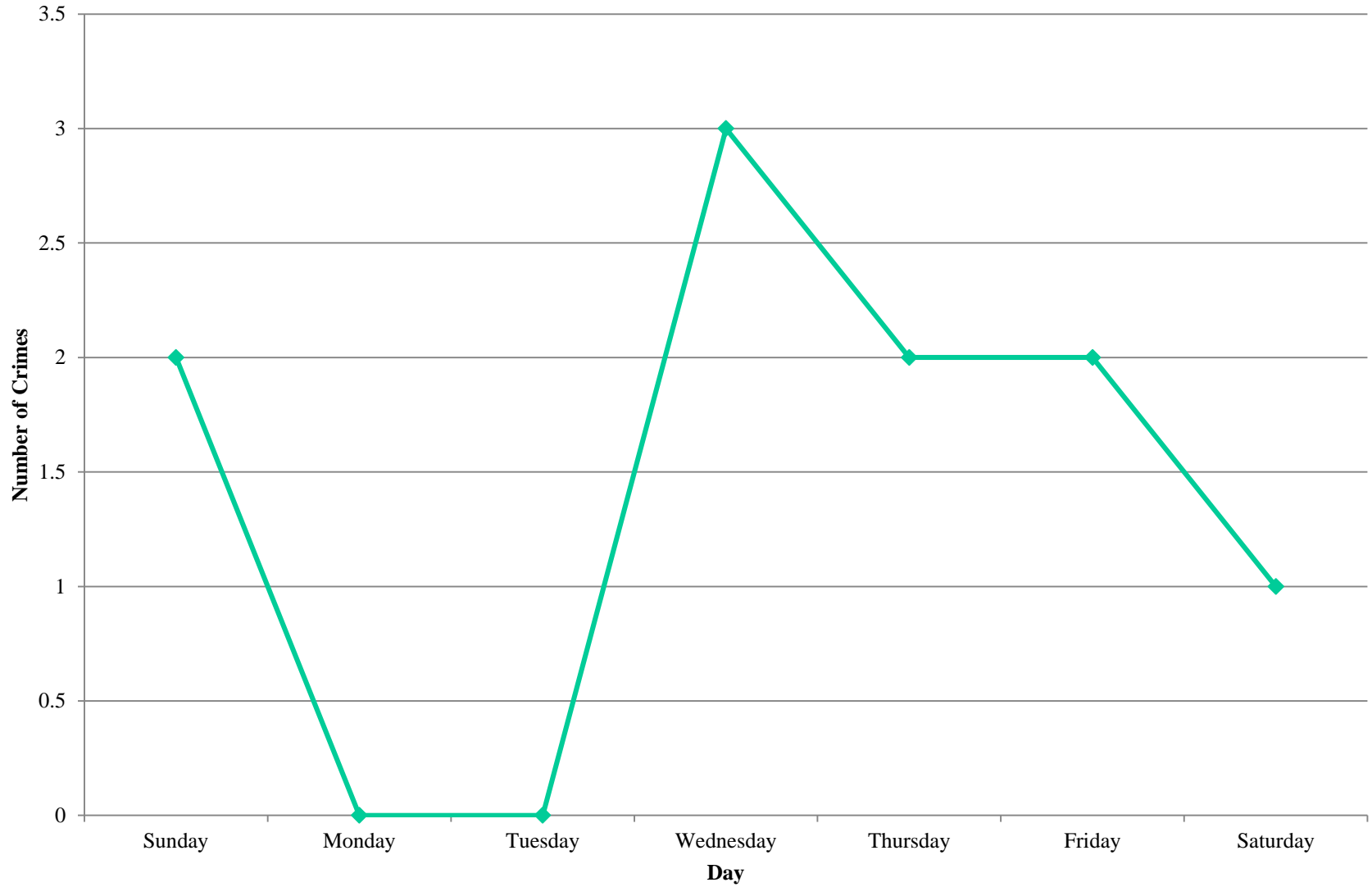
Day	
Sunday	0
Monday	0
Tuesday	0
Wednesday	1
Thursday	2
Friday	1
Saturday	0
Total	4

Day/Night	
Day	2
Night	2
Total	4

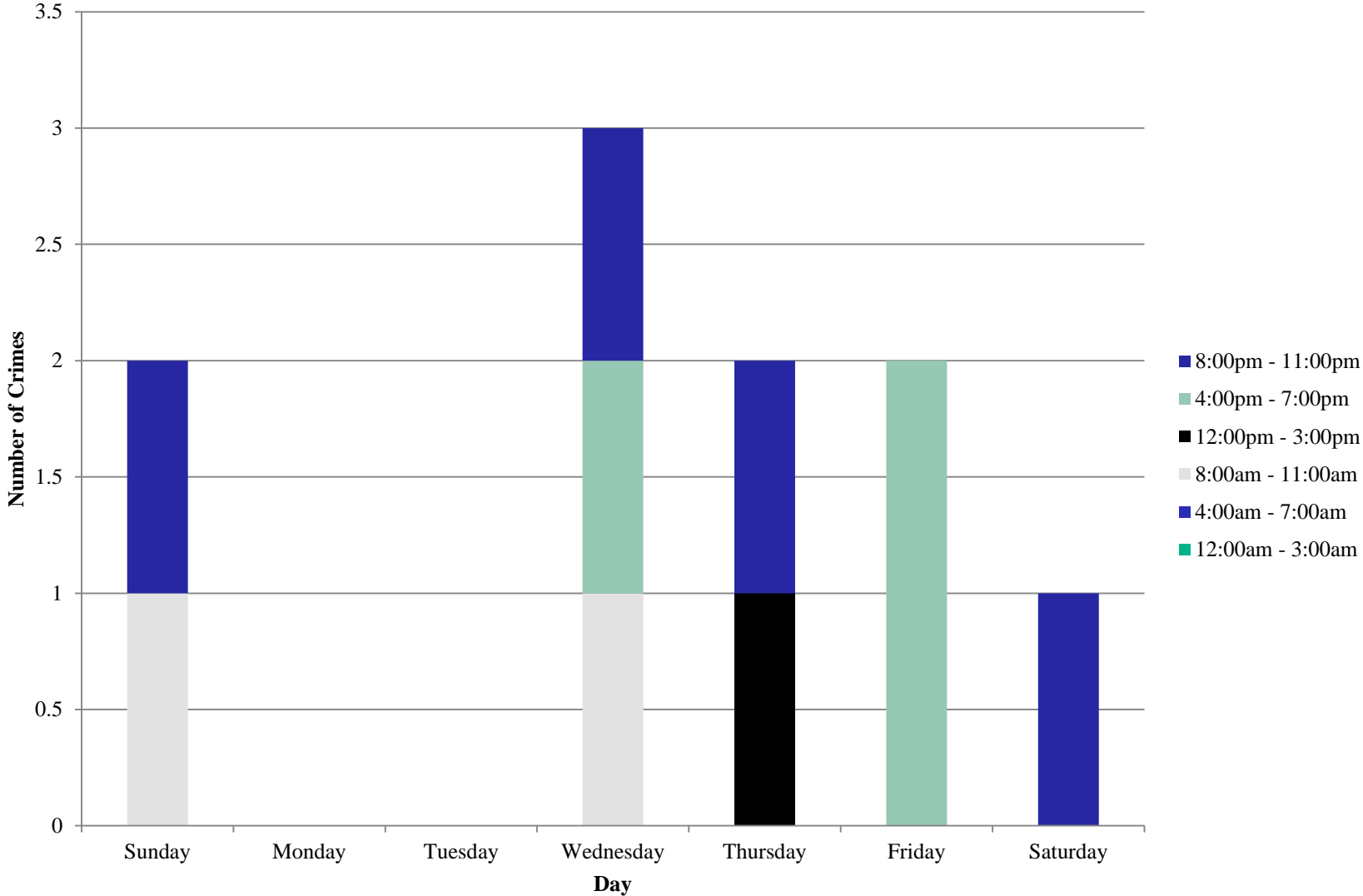
SDB Inside/Outside Larcenies



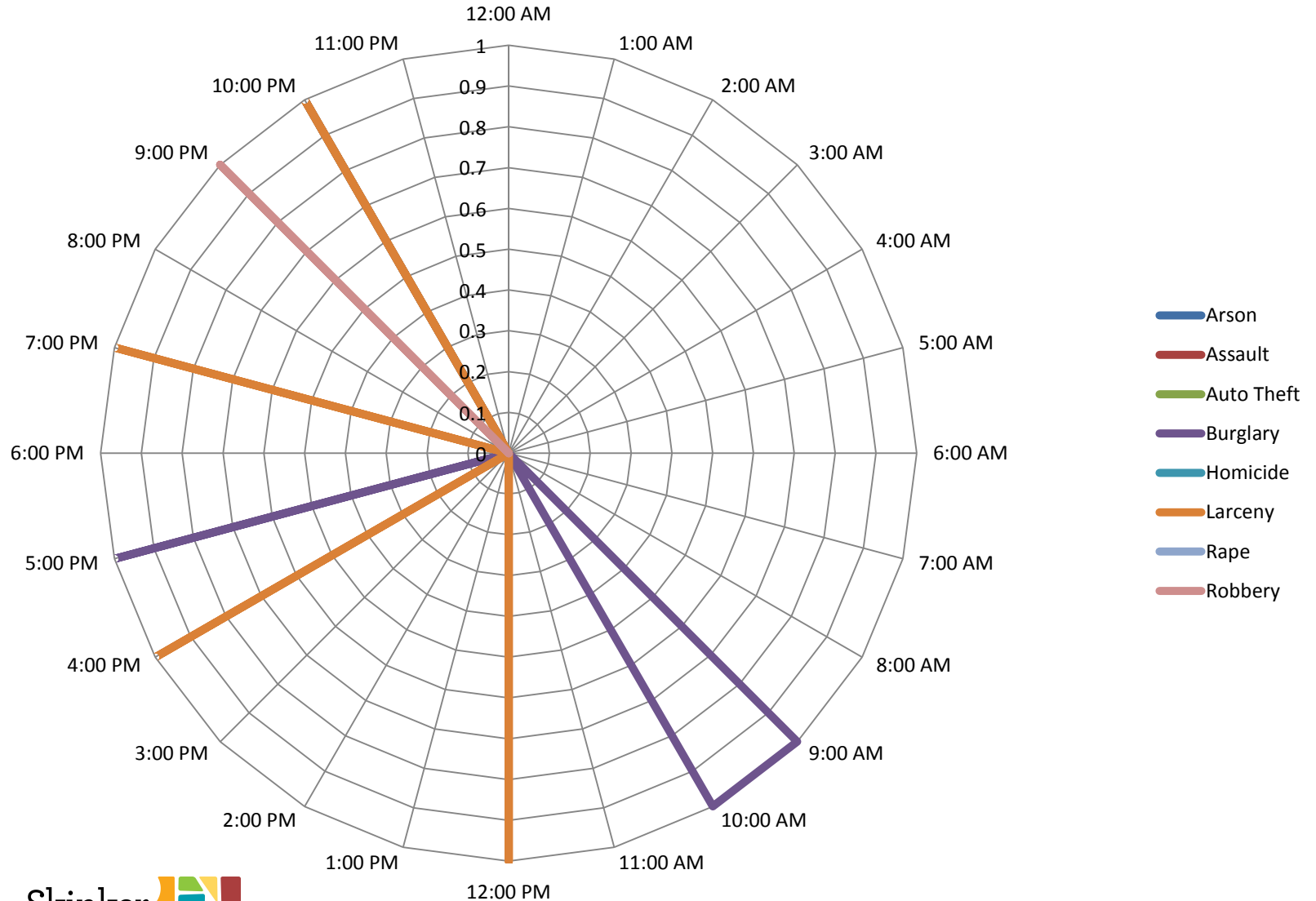
SDB Crime by Day - January 2019



SDB Crime by Day and Time Frame - January 2019



SDB Crime by Category and Time of Day - January 2019



SDB Crime by Category and Day - January 2019

