



Skinker-DeBaliviere

SAFETY AND SECURITY REPORT: MAY 2019

Summary Notes: SDB May 2019

- 32 Total Crimes
 - **166.67% increase** compared to May 2018 (12 crimes)
 - **Decreased:** auto theft
 - **Increased:** assault, burglary, larceny, robbery
 - **No change:** arson, homicide, rape
 - **11 crimes against persons** (7 assaults, 4 robberies)
 - **Increase** compared to May 2018 (0 crimes)
 - Crime occurred most frequently on Saturdays.
- 109 total crimes so far in 2019
 - **65.15% increase** compared to this point in 2018 (66 crimes)
 - **Decreased:** auto theft
 - **Increased:** assault, burglary, larceny, robbery
 - **No change:** arson, homicide, rape
 - **24 crimes against persons** so far in 2019
 - **100.00% increase** compared to this point in 2018 (12 crimes)

Skinker-DeBaliviere: May 2019

Crime	
Arson	0
Assault	7
Auto Theft	1
Burglary	4
Homicide	0
Larceny	16
Rape	0
Robbery	4
Total	32

Day	
Sunday	9
Monday	2
Tuesday	3
Wednesday	3
Thursday	2
Friday	3
Saturday	10
Total	32

Crimes Against	
Persons	11
Property	21
Total	32

Environment	
Inside	6
Outside	26
Unknown	0
Total	32

Day/Night	
Day	19
Night	13
Total	32

SDB: Comparing 2018 and 2019

2018		Jan	Feb	Mar	Apr	May	Jun	Jul	Aug	Sep	Oct	Nov	Dec	Year End Total	
	Arson	0	0	0	0	0	0	0	0	0	0	0	0	0	0
	Assault	6	0	1	0	0	7	2	6	1	3	2	1	29	
	Auto Theft	1	1	3	2	4	1	3	6	1	3	1	1	27	
	Burglary	2	0	1	0	2	3	3	4	2	2	1	0	20	
	Homicide	0	0	0	0	0	0	0	0	0	0	0	0	0	
	Larceny	10	7	8	7	6	9	10	13	16	10	15	13	124	
	Rape	0	0	0	0	0	0	0	0	0	0	0	0	0	
	Robbery	0	2	1	2	0	2	2	1	7	0	1	0	18	
Total Crimes	19	10	14	11	12	22	20	30	27	18	20	15	218		

2019		Jan	Feb	Mar	Apr	May	Jun	Jul	Aug	Sep	Oct	Nov	Dec	YTD	M/M Change	YTD Change
	Arson	0	0	0	0	0								0	-	-
	Assault	0	1	7	1	7								16	-	128.57%
	Auto Theft	1	3	0	0	1								5	-75.00%	-54.55%
	Burglary	4	9	0	1	4								18	100.00%	260.00%
	Homicide	0	0	0	0	0								0	-	-
	Larceny	4	9	16	17	16								62	166.67%	63.16%
	Rape	0	0	0	0	0								0	-	-
	Robbery	1	1	0	2	4								8	-	60.00%
Total Crimes	10	23	23	21	32								109	166.67%	65.15%	

Appendix 1 Links

- [SBD Day/Night Crimes](#)
- [SDB Violent Crimes](#)
- [SDB Density Map](#)
- [SDB Larceny Breakdown](#)
- [SDB Inside/Outside Larcenies](#)
- [SDB Crime by Day](#)
- [SDB Crime by Day and Time](#)
- [SDB Crime and CFS by Time](#)
- [SDB Crime by Category and Time](#)
- [SDB Crime by Category and Day](#)

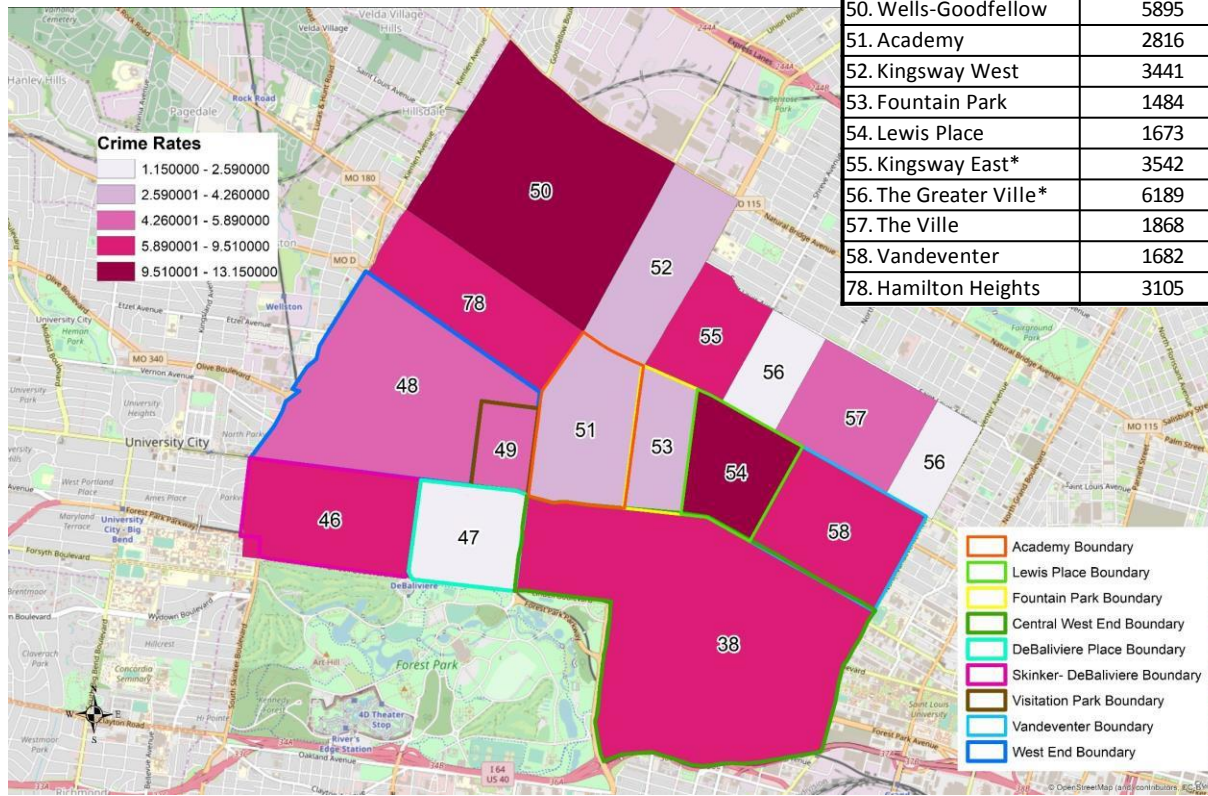
Summary Notes: DBP May 2019

- 4 Total Crimes
 - **63.64% decrease** compared to May 2018 (11 crimes)
 - **Decreased:** auto theft, larceny, robbery
 - **Increased:** burglary
 - **No change:** arson, assault, homicide, rape
 - **0 crimes against persons**
 - **100.00% decrease** compared to May 2018 (2 crimes)
 - Crime occurred most frequently on Wednesdays.
- 38 total crimes so far in 2019
 - **41.54% decrease** compared to this point in 2018 (65 crimes)
 - **Decreased:** auto theft, larceny, robbery
 - **Increased:** burglary
 - **No change:** arson, assault, homicide, rape
 - **7 crimes against persons** so far in 2019
 - **22.22% decrease** compared to this point in 2018 (9 crimes)

District 5 Density Map: May 2019

*Kingsway East and The Greater Ville neighborhoods are split between District 5 and District 6.

Neighborhood	2010 Population	May Crime Count	Crime Rate per 1000 People
38. Central West End	14471	110	7.67
46. Skinker-DeBaliviere	4077	32	7.85
47. Debaliviere Place	3466	4	1.15
48. West End	6574	37	5.63
49. Visitation Park	960	5	5.21
50. Wells-Goodfellow	5895	62	10.52
51. Academy	2816	12	4.26
52. Kingsway West	3441	14	4.07
53. Fountain Park	1484	6	4.04
54. Lewis Place	1673	22	13.15
55. Kingsway East*	3542	26	7.34
56. The Greater Ville*	6189	16	2.59
57. The Ville	1868	11	5.89
58. Vandeventer	1682	16	9.51
78. Hamilton Heights	3105	26	8.37



District 5 Density Map Explanation

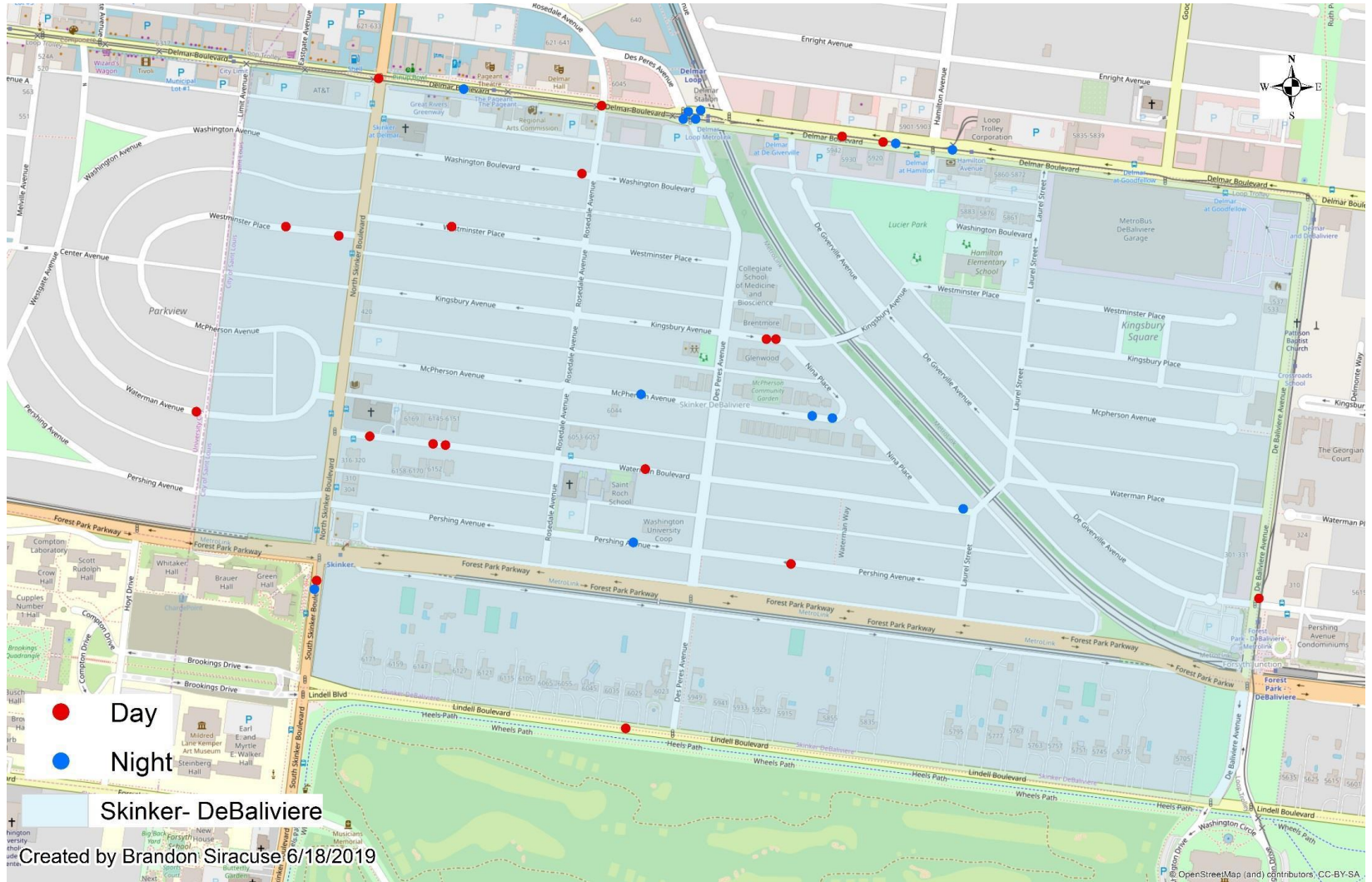
- District 5 Map
 - There are 15 neighborhoods in District 5.
 - The **minimum number of crimes** in one neighborhood was 4 (DeBaliviere Place).
 - The **maximum number of crimes** in one neighborhood was 110 (Central West End).
 - The **mean number of crimes** for the district was 26.60.
- Crime Rate
 - The crime rate was calculated using the population data from the 2010 census data.
 - The **minimum crime rate** was 1.15 crimes per 1,000 people (DeBaliviere Place).
 - The **maximum crime rate** was 13.15 crimes per 1,000 people (Lewis Place).
 - The **mean crime rate** for the district was 6.48 crimes per 1,000 people.



Skinker- DeBaliviere

APPENDIX 1

SDB Day/Night Crimes



SDB Violent Crimes



SDB Crime Density Map



SDB: May 2019

Larceny Breakdown

Type of Larceny	
All Other	0
Bicycle	1
From Building	0
From Coin Machine	0
From Motor Vehicle	14
Motor Vehicle Parts	1
Purse Snatching	0
Shoplifting	0
Total	16

Environment	
Inside	0
Outside	16
Unknown	0
Total	16

Monetary Value	
Under \$500	16
\$500 - \$24,999	0
Over \$25,000	0
Total	16

Time Frame	
12:00am - 3:00am	2
4:00am - 7:00am	0
8:00am - 11:00am	2
12:00pm - 3:00pm	0
4:00pm - 7:00pm	9
8:00pm - 11:00pm	3
Total	16

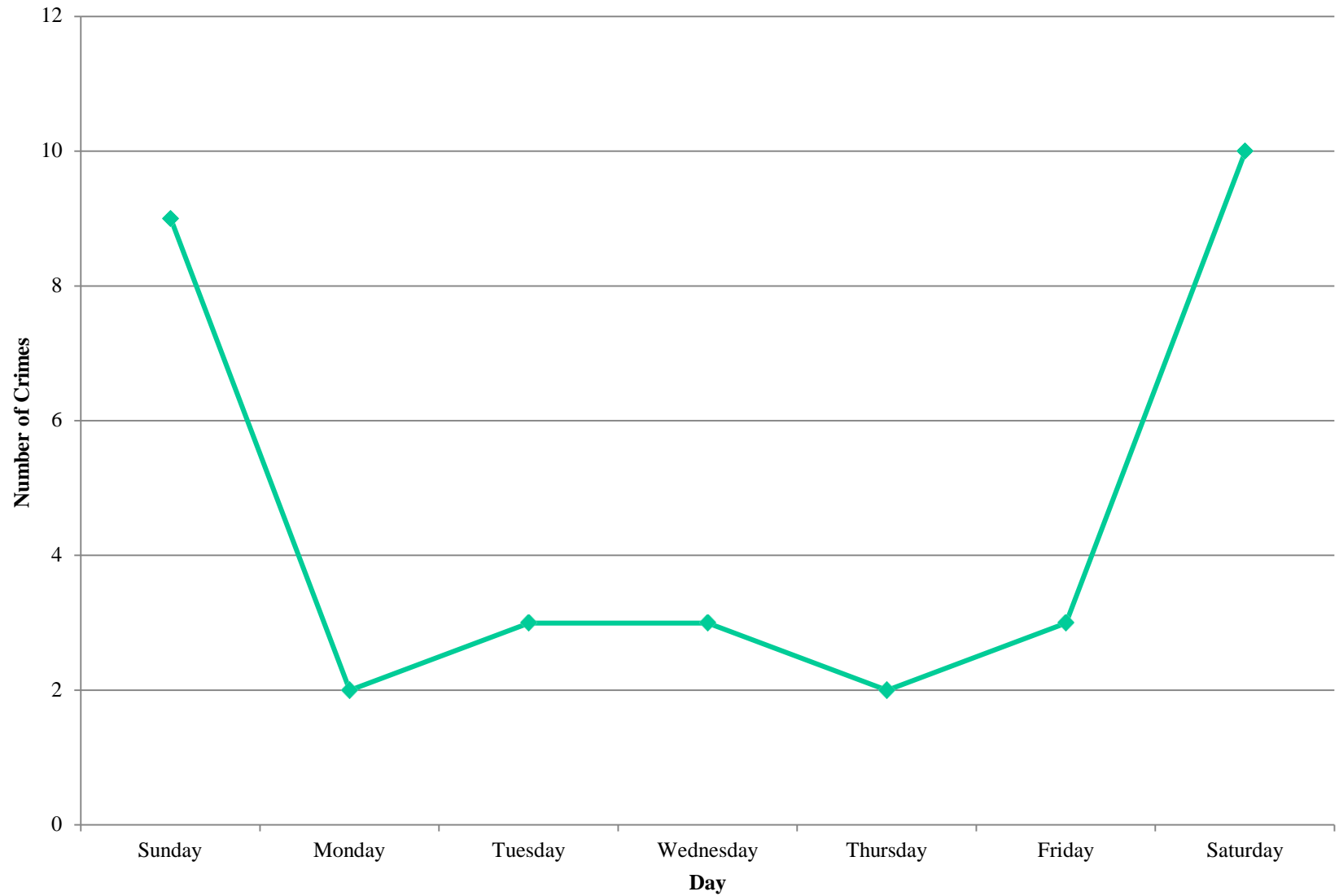
Day	
Sunday	5
Monday	1
Tuesday	1
Wednesday	2
Thursday	2
Friday	1
Saturday	4
Total	16

Day/Night	
Day	11
Night	5
Total	16

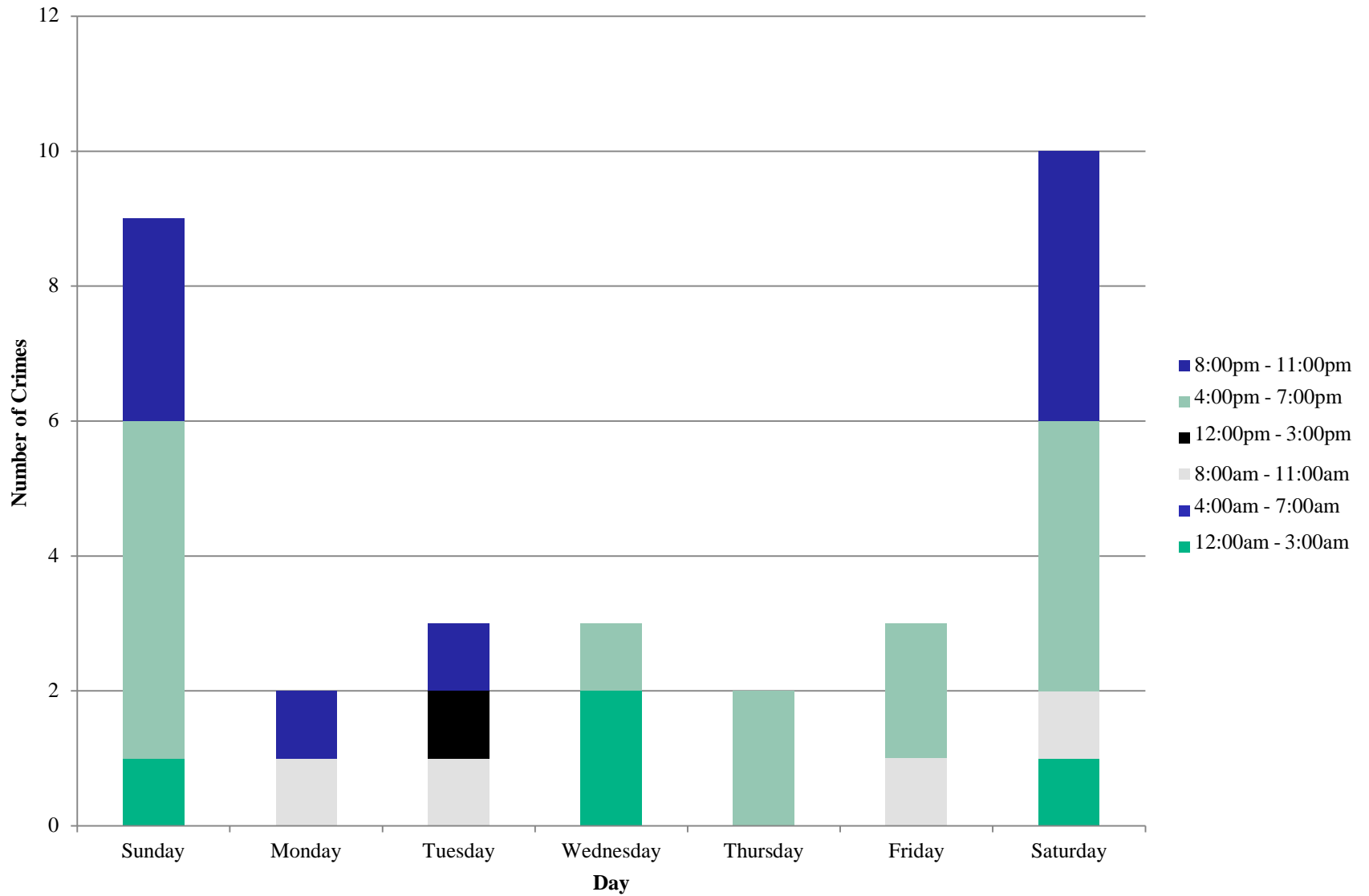
SDB Inside/Outside Larcenies



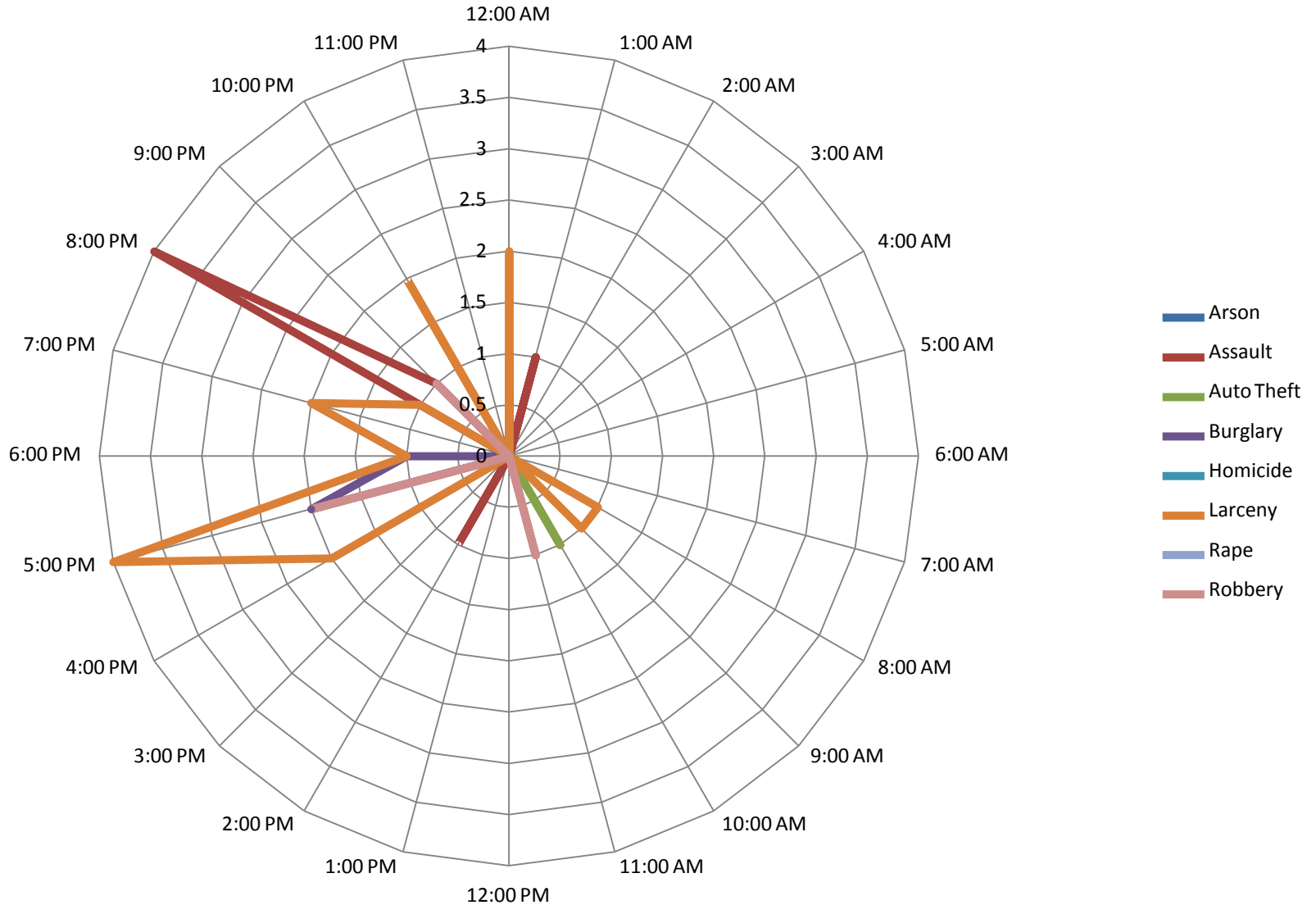
SDB Crime by Day - May 2019



SDB Crime by Day and Time Frame - May 2019



SDB Crime by Category and Time of Day - May 2019



SDB Crime by Category and Day - May 2019

